



Promoting Health by  
Preventing Error.



# Automation

- Retail**
- Long Term Care**
- Acute Care**



## Servilocker

### 24/7 Prescription Retrieval

Provide your clients with prescription retrieval when it suits them best with the Servilocker. This automated storage and 24-hour dispensing system for Rx Retrieval can be placed in the pharmacy or in off-site and remote locations. The Servilocker is available in two different variants; single or double.

### THE BENEFITS

- The Servilocker is a stand alone dispensing apparatus which can be placed in various locations.
- It is fully accessible and can be remotely controlled by the Pharmacist.
- Reduces waiting time for patients at the pharmacy counter.
- It takes about 30 seconds to retrieve their medications safely.
- Prescriptions can be collected anytime, 24/7.
- Extended opening hours without staff.
- Automated message service.
- If requested, the Servilocker can be delivered in a double-sided version. This allows the machine to be placed in such a way that retrieving prescriptions through the wall becomes possible.
- The Servilocker reduces FTE in your Pharmacy.

### SPECIFICATIONS

- **Power Supply :** CAD standard, max 3 Amps
- **Communication:** Remote via Internet
- **Touch Screen :** 10" touch screen, includes a PC
- **Loading time / dispense time:** Avg 6 sec (via access door) / avg 30 sec
- **Personalisation:** The Servilocker can easily be logo'd or branded
- **Total storage places in standard Servilocker:** 162 slots
- **Storage slot for assembled prescription bag:** Small Slot: W 80mm, H 190 mm, D 300mm Medium Slot: W160 mm, H 190mm, D 300mm

Width: 43.5" (110.5 cm)  
Length: 39.37" (100 cm)  
Height: 79.53" (202 cm)  
Weight: 771.62 lbs (350 kg)

**ITEM NUMBER: AP SERVILOCKER**



## RM1 Pill Counter

### Tabletop Automation

The RM1 is a brand new, vision based pill counter designed to quickly and accurately count medications with a familiar counting tray design.

A compact and light-weight counter top unit that is completely silent while in use.

The RM1 comes with a variety of accessories: including easy-to-pour collection pods, a direct to vial dispensing pod, and a high volume pitcher pod and a spatula for clearing the surface.

- Quickly and accurately counts oral solid medications.
- Counts medications without having to calibrate.
- Low profile design at just 7.6 inches tall.
- Easy to read display clearly indicates counted quantity of pills on counting surface.
- Bulk chutes make counting inventory fast and efficient.
- Accumulation Mode - Maintains the last count once surface is cleared, great for inventory counts.

## SPECIFICATIONS

---

- **Power: Standard wall outlet, 110V**
- **No disassembly required to clean common surfaces**

**ITEM NUMBER: RM1**

Counting Surface Area: 28 sq-inch (8" x 6")  
Footprint: 14"W x 12.1"L x 6"H  
Weight: 6lb (2.7kg)



### RM1 Pod Canister

An extra universal collector pod. Fits on either side of the RM1 counter, and is marked with vial size reference points.

**ITEM NUMBER: RM1 CANISTER** - Available Individually



### RM1 Spatula

An extra spatula, for clearing the counting surface.

**ITEM NUMBER: RM1 SPATULA** - Available Individually



### Bulk Container & Chute

A high volume pitcher pod for quick & easy inventory counts and a high-count dispensing chute, for direct to vial dispensing.

**ITEM NUMBER: RM1 CHUTE & BULK** - Comes as a set



## MDM V2.0

### Medication Detection Machine

The compact MDM V2.0 remains the most accurate verification device available. It has been specially designed for medicine repackagers, including individual pharmacies, hospitals and care establishments, to check unit and multi-dose pouches quickly and securely.

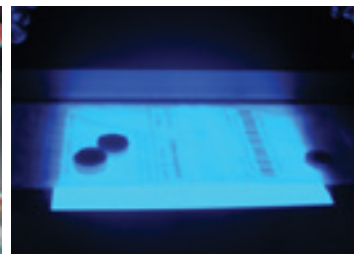
- Verifies tablet colour, shape and quantity.
- Stores colour image of each pouch for accountability.
- Reports verification results for quick and simple sign off by pharmacist or technician.
- Accurate checking of up to 75 pouches per minute.
- Provides statistics for process overview.
- Patented agitation process reduces false alarm potential.



Unlimited pouch entry



Patented pouch agitation and pill separation



Digital colour image of each pouch



MDC Verification

## SPECIFICATIONS

- **Power: 110 V systems - 6.9A / PC Power: 6A**
- **220 V systems - 3.8A / PC Power - 3A**
- **Delivered inclusive with unwinder, foot operated winder and base cabinet**

Width: 21.06" (53.5 cm)  
 Length: 53.54" (136 cm)  
 Height: 37.40" (95 cm)  
 Weight: 110.23 lbs (50 kg)

**ITEM NUMBER: GF11-57559**



## SAWinder V4.0

### Winding Pouch-Rolls

The SA Winder is a standalone winder that can also be used in conjunction with the MDM, controlled by a simple foot pedal or hand controller to regulate the speed.

- Foot or hand control.
- Winds in either direction.
- Tiltable head with three positions.



## SPECIFICATIONS

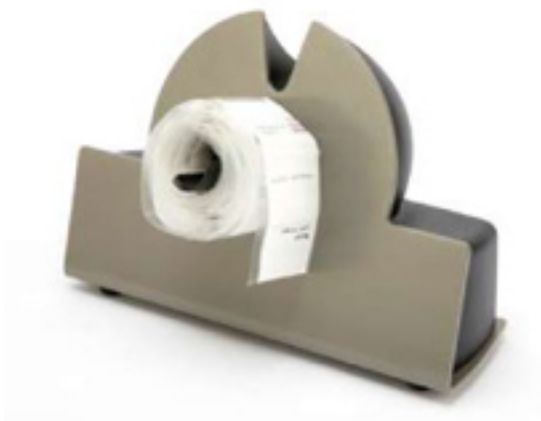
- Power: 220-240 V-50Hz 30VA
- or: 110 V-60Hz 30 VA
- Includes heat sensor to prevent overheating

**ITEM NUMBER: GF16-80515**

Height: 47.24" (120 cm)

Footprint: 18.11" X 18.11" (46 cm x 46 cm)

Weight: 26.45 lbs (12 kg)



### Table Winder

The Table Top Winder is a stand-alone winder for checking and repairing smaller, individual patient rolls. This convenient device is designed to sit on a table top and is operated by an electric foot pedal.

- Foot pedal control
- Left and right handed operation
- Quick release option

**ITEM NUMBER: GF12-55039**



### Seal Roller MDM-Winder

**ITEM NUMBER: GF08-85601**



### Roll of Stickers

1250 Roll of Stickers

**ITEM NUMBER: MDM-30-45-100**



## Versi-Fill XL

### Automatic Dispensing

The patented technology of the Versi-Fill XL makes it the only Pharmacy Automation on the market that can fill both Single-Dose and Multi-Dose Blister Cards for all leading compliance packs currently available in Canada.

- Dispensing capabilities include unit and multi-dose filling, skip pockets and partial fill capability, and batching for inventory.
- Versi-Fill XL is equipped with 60 medication canisters as standard and can be expanded up to 600 canisters with the external inventory feature.
- On the fly replenishment allows the med canisters to be replenished in the middle of a prescription dispense cycle.
- Replenish, add or remove med canisters in less than 60 seconds.
- Change over from one card type to another or card to vial in as little as 30 seconds or less.
- No interfacing required.

#### ADAPTABLE

The Versi-Fill XL will fill all leading compliance packs available in Canada

#### PRODUCTIVE

Increase your technician's productivity by 3x by automating blister filling

#### SMALL FOOTPRINT

The Versi-Fill XL is 30 in (76.2 cm) wide x 36 in (91.5 cm) deep x 72 in (182.9 cm) high

## SPECIFICATIONS

**ITEM NUMBER: VERSI-1043-03-000**

Width: 30" (76.2 cm)

Length: 36" (91.5 cm)

Height: 72" (182.9 cm)



## Versi-Mate

### Automatic Table-Top Dispensing

The patented technology of the Versi-Mate makes it the only Pharmacy Automation on the market that can fill both Single-Dose and Multi-Dose Blister Cards for all leading compliance packs currently available in Canada.

- The Versi-Mate is a stand alone barcode driven table top blister filling machine.
- No interfacing required.
- Dispensing capabilities include unit and multi-dose filling, skip pockets and partial fill capability, and batching for inventory.
- Versi-Mate works with unique medication canisters and can be expanded up to 540 medications.
- Change over from one card type to another or card to vial in as little as 30 seconds or less.

#### ADAPTABLE

The Versi-Mate will fill all leading compliance packs available in Canada

#### PRODUCTIVE

Increase your technician's productivity by 3x by automating blister filling

#### SMALL FOOTPRINT

The Versi-Mate Table Top is 30 in (76.2 cm) wide x 22 in (55.9 cm) deep x 21 in (53.3 cm) high and can fit easily on a pharmacy counter top

## SPECIFICATIONS

**ITEM NUMBER: VERSI-1027-00-000**

Width: 30" (76.2 cm)

Length: 22" (55.9 cm)

Height: 21" (53.3 cm)

## Pentapack HP500

### Packaging Machine

The HP500 bulk unit dose packager is capable of overwrapping and bar coding oral solids, liquids, suppositories, ampoules and syringes. Producing anywhere between 20 to 160 doses per minute, the HP500 makes individual unit dose packages perfect for placement in decentralized automated dispensing cabinets. The Pentapack also places individual barcodes on each package ensuring BCMA guidelines are met.

Consumable products used in conjunction with the HP500 to form and seal blisters are of pharmaceutical grade and available in various materials, pigments, moisture barriers and thickness to meet the demanding needs of today's Healthcare facilities.



**Forming Station**



**Electrical Control**



**Printing Systems**



**Liquid Dosing System**

## SPECIFICATIONS

- **Power:** 220V~50Hz 6A or 110 V~60Hz 12A
- **Air Pressure:** 6 bar
- **Includes Unwinder unit**

**ITEM NUMBER: PP HP500**

Width: 29.13" (74 cm)  
Length: 66.93" (170 cm)  
Height: 73.62" (187 cm)  
Weight: 825 lbs (375 kg)



### Aluminum Foil

ITEM NUMBER: PENTA001

1500m/Roll    99 mm wide    20 um



### Transparent PVC

ITEM NUMBER: PENTA003

200m/Roll    100mm wide



### Orange PVC

ITEM NUMBER: PENTA005

200m/roll    99mm wide

For light sensitive medication.



### Ribbon for TEC Printer Toshiba BSX 4/5

ITEM NUMBER: PENTA007

600m/roll    88.9mm wide



### Permanent Label

ITEM NUMBER: PENTA009

200m/roll    80mm Wide



### Peelable Label

**ITEM NUMBER: PENTA013**

200m/roll      80mm Wide

---



### Silver Foil/Peelable

**ITEM NUMBER: PENTA014**

(895m/Roll) Lid Material      99mm wide